

BUILDER SPOTLIGHT – LIVING HOMES INC.



IMAGES COURTESY OF LIVING HOMES INC.

This home at 5000 Destin Lane provides nearly 4,000 square feet of living space.

Home's Luxurious amenities will appeal to high-end buyers

Space: 3,932 square feet (2,234 on main level, 1,698 on upper level)

Bedrooms: 4

Baths: 3½

Garage: 3 car

Special Features: five acres of rolling countryside, upgraded lighting fixtures, extensive interior trim, red oak hardwood floors in main living areas with flush heating registers, granite countertops and high-end all-wood cabinets throughout house, upgraded stainless appliances, automatic lighting in pantry, pot filler faucet at cook top, large custom stone shower, master suite on first floor with separate sitting area that opens to covered patio, Jacuzzi tub, granite and travertine bathroom, solid mahogany front door with beveled glass, wide staircases, smooth panel interior doors, all closets have wood shelving, covered front porch, large rooms, lots of windows and light, marble countertop in half-bath

Lot size: five acres

Price: \$645,000

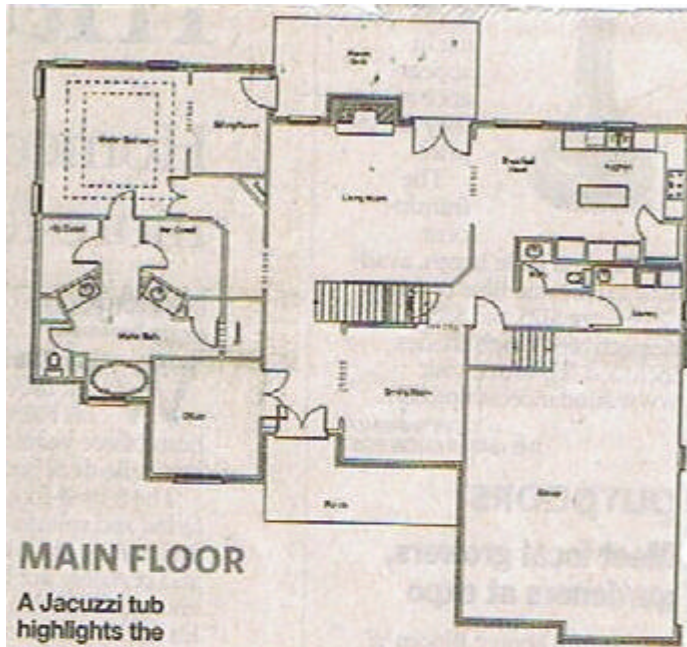
Location: 5000 Destin Lane, off Byrd Lane in the College Grove area of Williamson County

School zone: Bethesda Elementary, Page Middle and Page High schools

Information: www.5000destinln.com, Becky Meagher at 975-7000 or meaghernas@aol.com

About this Feature

- Middle Tennessee builders are answering home buyers' requests for more open and private space in new houses going up in the area.
- The Tennessean wants to show readers the latest designs, displaying a different builder's plans each week. Because of print schedules, availability and price are not guaranteed; call the builder for more information.
- If you are a Middle Tennessee builder and would like to have your work featured, send e-mail to bgreer@tennessean.com



MAIN FLOOR

A Jacuzzi tub highlights the master suite bathroom.

The upstairs features a bonus room and additional bedrooms.

2ND FLOOR

